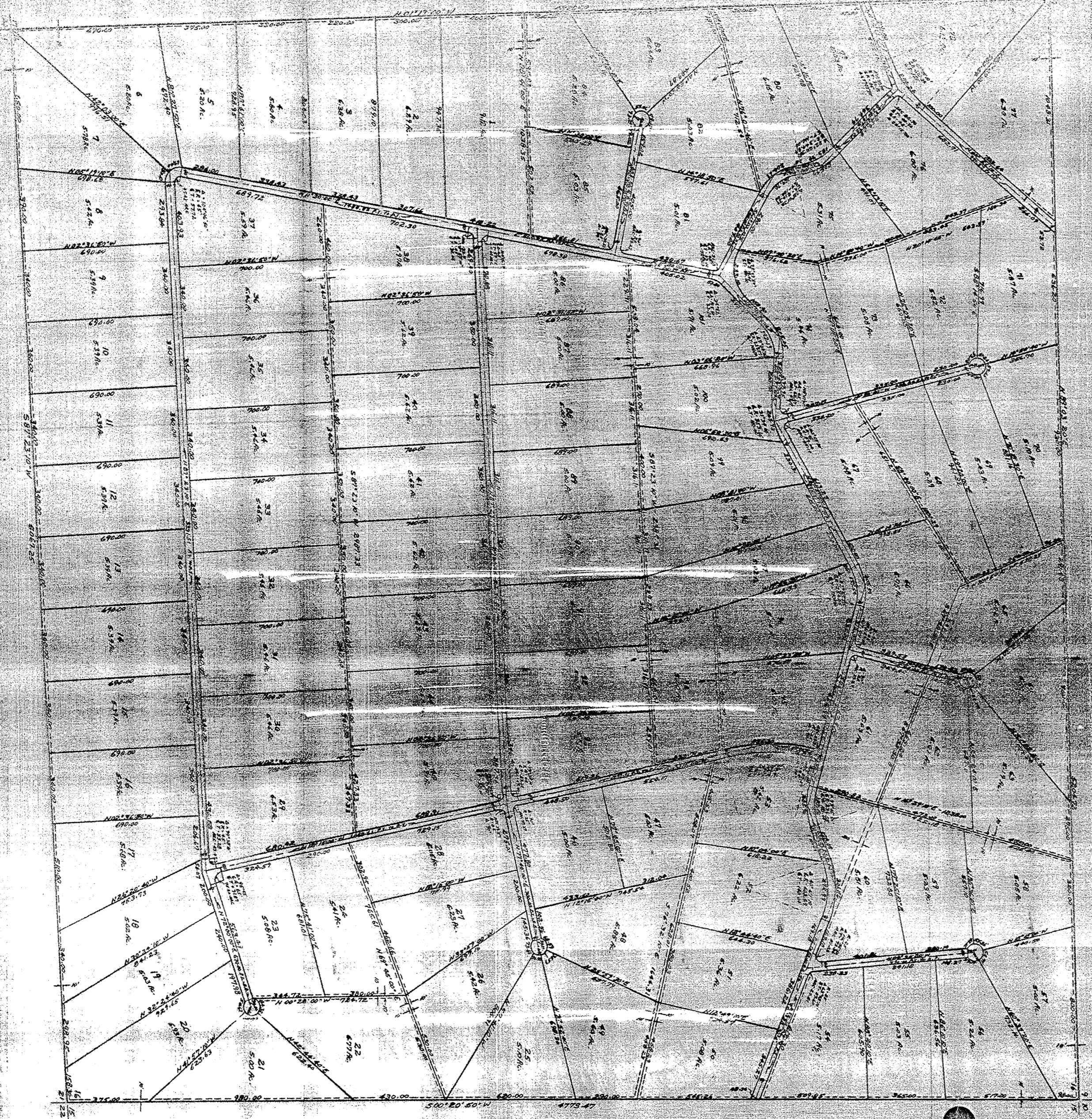


AVANZADA
 PLAN OF
 UNIT 6
 TIERRA VERDE RANCHETTES
 SEC. 16, T. 8 N. R. 2 W. N. 20 E.
 VALENCIA COUNTY, NEW MEXICO



This plan of this subdivision is for the
 purpose of showing the location and the
 boundaries of the several lots and tracts
 and the easements thereon.
 All measurements are in feet and inches.
 The bearings are given in degrees, minutes
 and seconds.
 The corners are marked with iron
 nails, iron pipes, or other permanent
 monuments.
 The survey was made by me or under my
 direct supervision and the accuracy
 of the same is guaranteed.
 My commission expires on the 1st day of
 January, 1911.
 Wm. H. Campbell
 Surveyor



A general survey of land and water in the portion of Section 16, Township 8 North, Range 2 West, New Mexico Principal Meridian, Valencia County, New Mexico, was made by me or under my direct supervision on the 1st day of August, 1909, and the same was recorded in the public records of the county of Valencia, New Mexico, on the 1st day of August, 1909, under the name of 'Plan of Unit 6, Tierra Verde Ranchettes, Section 16, Township 8 North, Range 2 West, New Mexico'.
 The purpose of this survey was to show the location and boundaries of the several lots and tracts and the easements thereon.
 The survey was made by me or under my direct supervision and the accuracy of the same is guaranteed.
 My commission expires on the 1st day of January, 1911.
 Wm. H. Campbell
 Surveyor

B-141