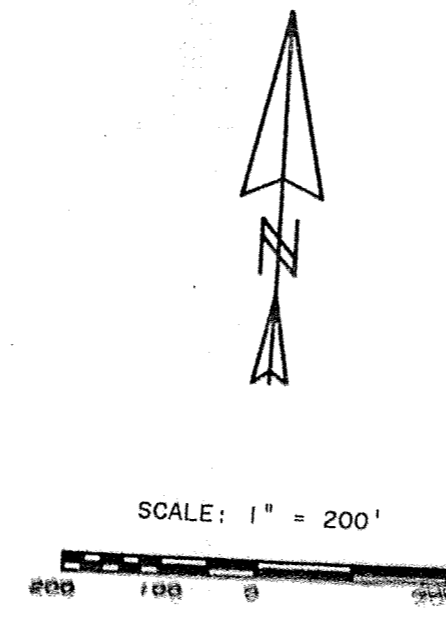
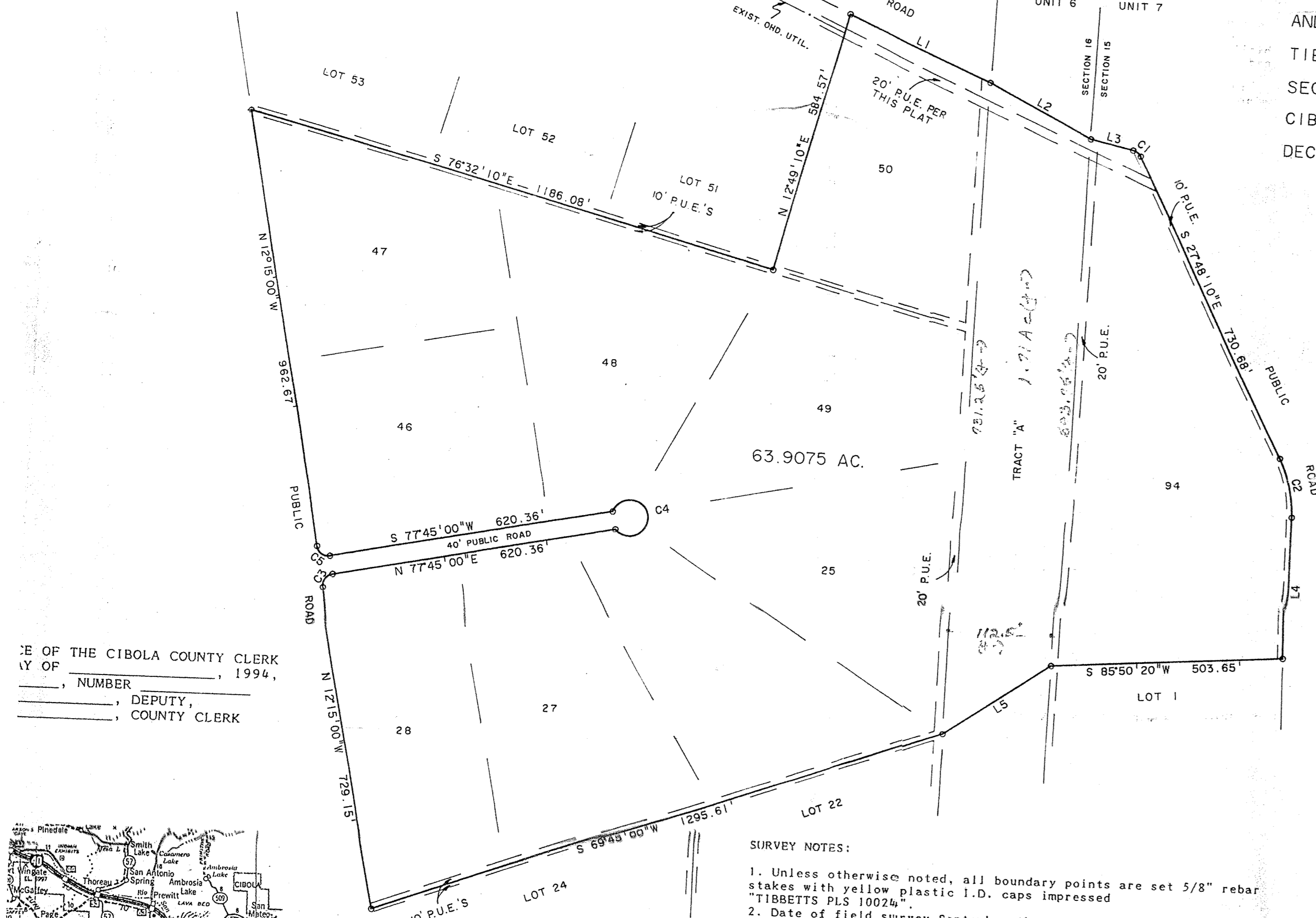


CURVE	DELTA ANGLE	RADIUS	ARC	LINE	BEARING	DISTANCE
C 1	50°21'20"	25.00'	21.97'	L 1	S 67°37'17"E	345.24'
C 2	26°09'50"	302.24'	138.02'	L 2	S 63°29'19"E	252.89'
C 3	90°00'00"	25.00'	39.27'	L 3	S 78°09'30"E	95.04'
C 4	300°00'00"	40.00'	209.44'	L 4	S 01°38'20"E	333.64'
C 5	90°00'00"	25.00'	39.27'	L 5	S 54°41'56"W	279.15'

PLAT OF SURVEY
 LOTS 25, 26, 27, 28, 46,
 47, 48, 49 AND 50 AND
 TRACT "A". UNIT 6
 AND LOT 94, UNIT 7
 TIERRA VERDE RANCHETTES
 SECTIONS 15 AND 16, T8N, R13W, N.M.P.M.
 CIBOLA COUNTY, NEW MEXICO
 DECEMBER, 1994



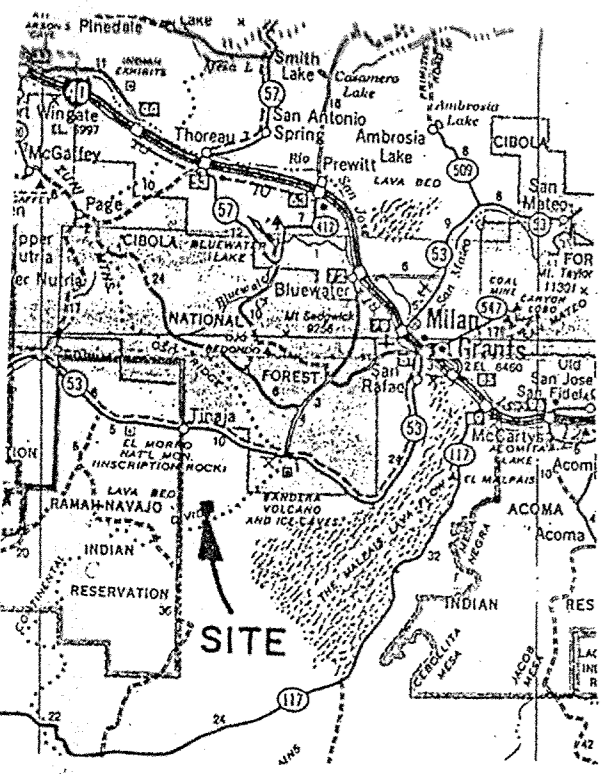
SE OF THE CIBOLA COUNTY CLERK
 Y OF _____, 1994,
 _____, NUMBER _____,
 _____, DEPUTY,
 _____, COUNTY CLERK

LEGAL DESCRIPTION
 Lots numbered Twenty-five (25), Twenty-six (26), Twenty-seven (27), Twenty-eight (28), Forty-six (46), Forty-seven (47), Forty-eight (48), Forty-nine (49) and Fifty (50), as such lots are shown and so designated on the Amended Plat of Unit 6, Tierra Verde Ranchettes, a subdivision filed in the office of the Valencia County Clerk on June 9, 1980, also including on the Amended Plat of Unit 7, Tierra Verde Ranchettes, filed in the office of the Valencia County Clerk on June 9, 1980, and also comprising an unplatted tract of land within Unit 6, Amended, Tierra Verde Ranchettes, herein referred to as Tract "A".

- SURVEY NOTES:
1. Unless otherwise noted, all boundary points are set 5/8" rebar stakes with yellow plastic I.D. caps impressed "TIBBETTS PLS 10024".
 2. Date of field survey September through December, 1994.
 3. Basis of bearings is plat of record, based on found points as shown.
 4. Course data in parentheses is from plat of record when field measured data differed by an amount exceeding accuracy prescribed by the Minimum Standards for Land Surveys in New Mexico.
 5. This parcel is located physically within Cibola County, but the plats mentioned were filed when it was within Valencia County, New Mexico.
 6. No new lots are created by this plat. Tract "A" is a hiatus between previously platted lands and is defined by this survey.

NOTE: Tract "A", Unit 6, as shown and designated on this plat is a parcel of land created by a hiatus between Unit 6 and Unit 7, Tierra Verde Ranchettes, as filed, due to a survey error on the previous plats. My survey has determined that the land was intended to be included within Unit 6, and that the unit boundary was to be a common line.

This was never filed.



SURVEYOR'S CERTIFICATE
 I, David E. Tibbetts, do hereby certify that I am a Registered Professional Land Surveyor, licensed under the laws of the State of New Mexico, that this plat was prepared by me from notes of actual field surveys performed by me or under my direction, that it meets the requirements of the Standards for Land Surveys in New Mexico, as adopted by the State Board of Registration for Professional Engineers and Land Surveyors, and is true and correct to the best of my knowledge and belief.

DT
 David E. Tibbetts, N.M.P.S. 10024 Date 12-29-94

BOUNDARY SUBDIVISION TOPOGRAPHIC
 LAND SURVEYING

DAVID TIBBETTS
 NEW MEXICO REGISTERED
 PROFESSIONAL LAND SURVEYOR

P.O. BOX 2385
 LOS ALAMOS, N.M. 87531
 TELEPHONE: 505/682-4322